

Flatbread Toaster

Model GST-1H Owner's Manual

Manufacturing Numbers:

9210973



Table of Contents

Table of Contents	2
Warranty Information	2
Service/Technical Assistance	2
Important Safety Information	3
Warnings	3
Specifications	4
Dimensions	4
Electrical.....	4
Installation	5
Operation	5
Light/Dark Adjustments	5
User Mode	6
Manager Mode	6
Purging product from Toaster	6
Safety Features	6
Hi-Limit Control	6
Daily Cleaning	7
Inspect the belts	7
Replacing Belts	7
Troubleshooting	10
Replacement Parts	12
Exploded Diagram #1	13
Exploded Diagram #2	14
Exploded Diagram #3	15
Exploded Diagram #4	16
Exploded Diagram #5	17
Wiring Diagram	18
NOTES	19
Limited Warranty	20

IMPORTANT

Antunes reserves the right to change specifications and product design without notice. Such revisions do not entitle the buyer to corresponding changes, improvements, additions or replacements for previously purchased equipment.

IMPORTANT

Keep these instructions for future reference. If the unit changes ownership, be sure this manual accompanies the equipment.

Warranty Information

Please read the full text of the Limited Warranty in this manual.

If the unit arrives damaged, contact the carrier immediately and file a damage claim with them. Save all packing materials when filing a claim. Freight damage claims are the responsibility of the purchaser and are not covered under warranty.

The warranty does not extend to:

- Damages caused in shipment or damage as result of improper use.
- Installation of electrical service.
- Normal maintenance as outlined in this manual.
- Malfunction resulting from improper maintenance.
- Damage caused by abuse or careless handling.
- Damage from moisture into electrical components.
- Damage from tampering with, removal of, or changing any preset control or safety device.

Service/Technical Assistance

If you experience any problems with the installation or operation of your unit, contact Antunes Technical Service at +1-877-392-7854 (toll free).

Fill in the information below and have it handy when calling for assistance. The serial number is on the specification plate attached to the unit.

Purchased From

Date of Purchase

Model Number

Serial Number

Manufacturing Number

Use only genuine Antunes replacement parts in this unit. Use of replacement parts other than those supplied by the manufacturer will void the warranty.

Important Safety Information

Use the following guidelines for safe operation of the unit.

- Read all instructions before using equipment.
- For your safety, the equipment is furnished with a properly grounded cord connector. Do not attempt to defeat the grounded connector.
- Install or locate the equipment only for its intended use as described in this manual. Do not use corrosive chemicals in this equipment.
- Do not operate this equipment if it has a damaged cord or plug, if it is not working properly, or if it has been damaged or dropped.
- This equipment should be serviced by qualified personnel only. Contact Antunes Technical Service for adjustment or repair.
- Do not block or cover any openings on the unit.
- Do not immerse cord or plug in water.
- Keep cord away from heated surfaces.
- Do not allow cord to hang over edge of table or counter.
- Turn the power off, unplug the power cord, and allow unit to cool down before performing any service or maintenance on the unit.
- This appliance can be used by children aged from 8 years and above and persons with reduced physical, sensory or mental capabilities or lack of experience and knowledge if they have been given supervision or instruction concerning use of the appliance in a safe way and understand the hazards involved.
- Children shall not play with the appliance.
- Cleaning and user maintenance shall not be made by children without supervision.
- **Turning off the power switch does NOT turn off all power to the unit.**

- The equipment should be grounded according to local electrical codes to prevent the possibility of electrical shock. It requires a grounded receptacle with separate electrical lines, protected by fuses or circuit breaker of the proper rating.
- All electrical connections must be in accordance with local electrical codes and any other applicable codes.
- Do not clean this appliance with a water jet.

Warnings

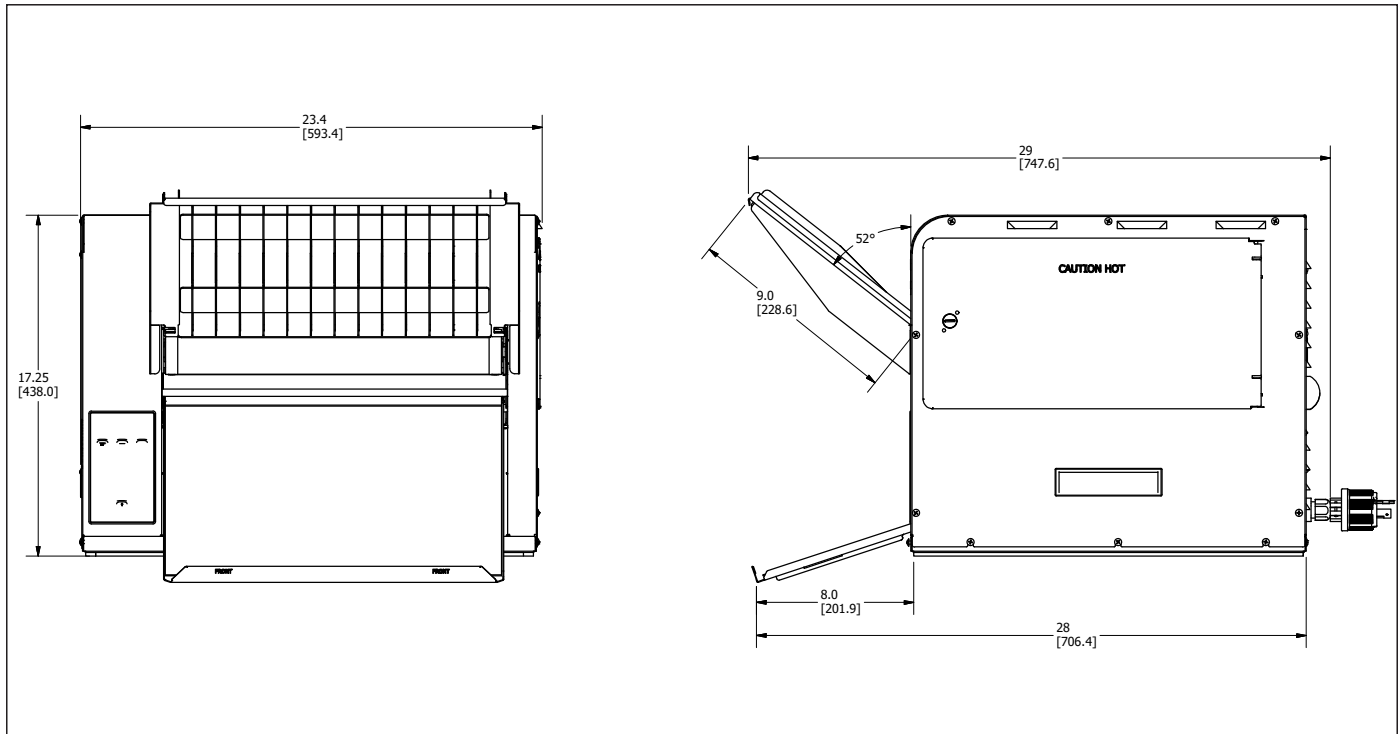
Be advised of the following warnings when operating and performing maintenance on this unit.

- If the supply cord is damaged, it must be replaced by the manufacturer or its service agent or a similarly qualified person in order to avoid a hazard.
- Do not modify the power supply cord plug. If it does not fit the outlet, have a proper outlet installed by a qualified electrician.
- Do not use an extension cord with this appliance.
- Electrical ground is required on this appliance.
- Check with a qualified electrician if you are in doubt as to whether the appliance is properly grounded.
- When using a chemical cleaner, be sure it is safe to use on cast aluminum. Observe all precautions and warnings on product label.
- Inspection, testing, and repair of electrical equipment should only be performed by qualified service personnel.
- Do not use a sanitizing solution or abrasive materials. These may cause damage to the stainless steel finish.
- Chlorides or phosphates in cleaning agents (e.g. bleach, sanitizers, degreasers or detergents) could cause permanent damage to stainless steel equipment. The damage is usually in the form of discoloration, dulling of metal surface finish, pits, voids, holes, or cracks. This damage is permanent and not covered by warranty.

- The following tips will help in the maintenance of stainless steel equipment:
 - Always use soft, damp cloth for cleaning, rinse with clear water and wipe dry. When required, always rub in direction of metal polish lines.
 - Routine cleaning should be done daily with soap, ammonia detergent, and water.
 - Stains and spots should be sponged using a vinegar solution.
 - Finger marks and smears should be rubbed off using soap and water.
 - Hard water spots should be removed using a vinegar solution.

Specifications

Dimensions



Electrical

Model & Mfg. No.	Volts	Watts	Hertz	Plug Description
GST-1H 9210973	208	4600	60	L6-30P 30 Amp., 250 Volt, Straight Twist Lock

Installation

1. Remove unit and all packing materials from shipping carton.
2. Open the Accessories Box. It should contain the following:
 - a. Chute
 - b. Feeder
 - c. Owner's Manual

NOTE: If any parts are missing or damaged, contact Antunes Customer Service IMMEDIATELY at +1-877-392-7856 (toll free).

3. Remove all packing materials and protective coverings from the unit and accessories.
4. With assistance, place the unit in the proper location.
5. Remove the top cover. Wipe the top cover, chute, and feeder with a clean sanitizer soaked towel. Allow to air dry.
6. Wipe the entire exterior of the unit with a clean sanitizer soaked towel. Allow to air dry.

NOTE: Do NOT use a dripping wet cloth. Wring out before USE.

7. Attach the top cover, feeder and

IMPORTANT

Do NOT plug in the power cord or turn the unit on before removing the wire ties indicated in the following step. Damage to the unit may result.

chute (Figure 3).

8. Unlock and open the side panel according to figure 2. Cut and remove the wire ties indicated in Figure 2.

When placing the toaster into service, pay attention to the following guidelines.

- Make sure the unit is off and the unit is at room temperature before plugging in the power cord.
- Do not block or cover any openings on the unit.
- Do not immerse the power cord or plug in water.
- Keep the power cord away from heated surfaces.
- Do not allow the power cord to hang over edge of table or counter.
- Place the unit on a sturdy, level table or other work surface.

- Turn the unit off if it is on.
 - Ensure the line voltage corresponds to the stated voltage on the specification label and power cord warning tag.
9. Plug the power cord into the appropriate power outlet. Refer to the specification plate for the proper voltage.

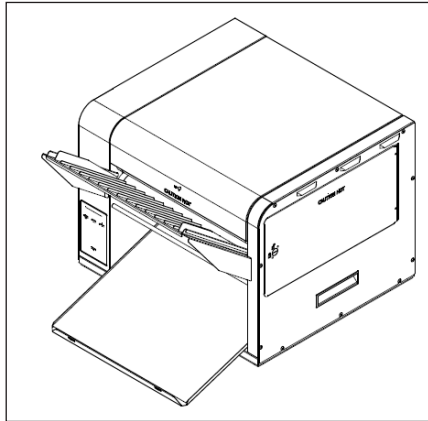


Figure 1. Flatbread Toaster (GST-1H)

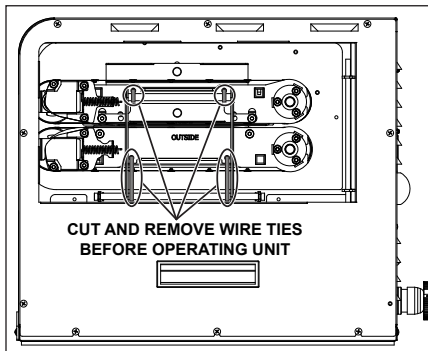


Figure 2. Remove Wire Ties

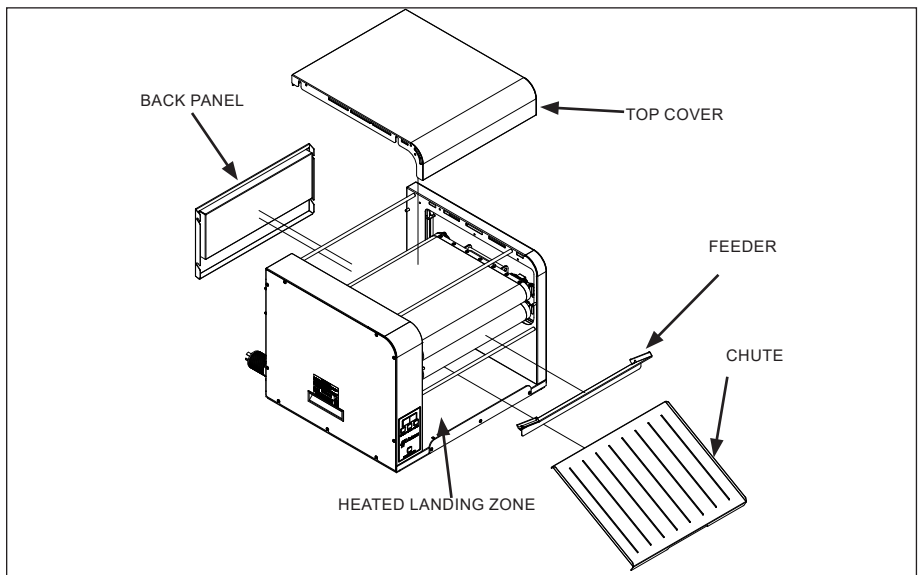


Figure 3. Components

Operation

1. Press and release the Power button to turn the toaster on. Allow the toaster to warm up until **USE** appears in the display
2. Insert product into the unit using the feeder.
3. Finished product drops onto the heated landing zone.

Light/Dark Adjustments

The light/dark value can be adjusted when the unit is displaying "USE". To adjust the light/dark value, press the **LIGHTER** or **DARKER** button. The display will change to show the current light/dark value.

NOTE: The default light/dark value is d0.

Press the **LIGHTER** or **DARKER** buttons to change the light/dark value. The adjustment range is L1-L9 and d0-d9. L9 is the lightest, d0 is the middle, and d9 is the darkest setting.

To save the light/dark value, wait 5 seconds until the screen displays "USE".

NOTE: Adjusting the light/dark value does NOT change the temperature. It changes the speed of the conveyors. The light/dark value will reset to the default value of d0 when the unit is turned off.

User Mode

User Mode allows an operator to view the toaster settings but does not permit any adjustments.

1. Press and hold the **PROGRAM** button for 5 seconds. After 5 seconds, the display will show the actual temperature of the top Platen.
2. Press the **LIGHTER** button to toggle between the Setpoint and actual temperature of the top Platen Heater.
3. Press the **PROGRAM** button for 5 seconds. After 5 seconds, the display will show the actual temperature of the bottom Platen.
4. Press the **LIGHTER** button to toggle between the Setpoint and actual temperature of the bottom Platen Heater.
5. Press the **PROGRAM** button to proceed to the Motor Menu. The display shows actual speed of the motor.
6. Press the **LIGHTER** button to toggle between the Setpoint and actual speed of the Motor.

NOTE: The unit will exit User Mode after 5 seconds of keypad inactivity.

Manager Mode

Manager Mode allows an operator to view and adjust the following settings:

- Heater Temperature (top/bottom)
- Motor Speed
- Temperature Units (Celsius or Fahrenheit)

Manager Mode also allows an operator to view (but not adjust) the Ambient Temperature of the Control Compartment.

1. Press and release the Power button to turn the toaster off.
2. Press and hold the **PROGRAM** button, then touch and release the **POWER** button. Continue holding the **PROGRAM** button until "ENA" (Enable) appears on the display (after approximately 10 seconds).
3. Release the **PROGRAM** button. The display shows the Top Heater Setpoint Temperature.

4. To adjust the Top Heater Setpoint Temperature, press the **LIGHTER** or **DARKER** buttons to reach the desired temperature.

NOTE: Set Points adjustable from 150 °F (65.5 °C) to 580 °F (304.4 °C).

NOTE: Changing temperature more than 20° may require a cool down period to avoid an error condition.

NOTE: If desired to turn off a platen (while in Fahrenheit mode only), the temperature may be decremented from 150° F to 0°F. Conversely, if the unit is off (meaning 0°F) it may be incremented from 0°F to 150° F.

NOTE: The "USE" temperature is 10% below the set point temperature. For example, if the set point temperature will equal 500 °F, the "USE" temperature will equal= 450 °F)

5. Press the **PROGRAM** button to program the motor speed.
6. Adjust the Motor Speed Setpoint by pressing the **LIGHTER** or **DARKER** buttons to change the motor speed.

NOTE: The Motor Speed is adjustable from 10-100.

Set Points			
Settings	Top	Bottom	Speed
9210973	500	500	100

7. Press the **PROGRAM** button to proceed to the Temperature Units.
8. To change the Temperatures units from Fahrenheit or Celsius, press the **LIGHTER** or **DARKER** buttons.
9. Press and hold the **PROGRAM** button to save any changes.

NOTE: The unit exits Manager Mode after 30 seconds of keypad inactivity.

Purging product from Toaster

If product gets stuck in the toaster, press and hold both the **UP** and **DOWN** arrow buttons to increase the belt speed until the product is purged from the toaster.

Safety Features

Hi-Limit Control

A Hi-Limit Control turns off electrical power to the heaters and control circuits and displays HL if the unit overheats. To reset the control:

1. Let the unit cool for 15 minutes.
2. Locate the Hi-Limit Controls on the rear of the unit. Remove the black protective cap.
3. Press and release the button. Re-install the protective cap.

NOTE: If the Hi-Limit Control requires continuous resetting, contact Antunes Technical Service.

Daily Cleaning

NOTE: The following supplies and cleaners are required for cleaning and have been validated by Antunes to be the most effective. The use of alternative supplies and chemicals may not effectively clean the belts and could cause belt damage.

IMPORTANT

DO NOT INSERT HANDS BETWEEN THE BELTS. USE CARE WHEN CLEANING THE BELTS AS THEY ARE MOVING. PERSONAL INJURY MAY RESULT!

- Heat Resistant Gloves
- Non-Abrasive Pad
- Clean Towels
- Water
- Sanitizer bucket

Inspect the belts

1. Press and release the Power button to turn the unit off. The unit enters a 45 minutes cool-down mode and automatically shuts down when complete.

NOTE: Be sure to perform cleaning steps during cool-down mode.

NOTE: The conveyors continue to turn during the cool-down mode.

2. Put on heat resistant gloves. Remove the Top Cover, Feeder, and Chute (Figure 3).
3. Wash, rinse and sanitize the Top Cover, Feeder, and Chute at the 3-compartment sink.

NOTE: Replace any belts that are torn, folded, missing snaps, or damaged. Belts should be removed **ONLY** during belt replacement or when required in a service situation (see images on page 9 for examples). Refer to the section titled Replacing Belts for instructions on removing and installing belts.

4. Clean the top and bottom belts with a clean, sanitized towel.
6. Wipe the exterior surfaces of the unit with a clean, sanitizer-soaked towel and allow to air dry.
7. Reinstall all accessories (Figure 3). Turn the unit on and test the unit before returning it to operation.

Replacing Belts

NOTE: Be sure to clean and sanitize the Belts completely. Failure to properly clean the Belts will shorten the life of the Belts and result in poor performance.

Over time, the Belts begin to show signs of wear. This wear appears in the form of tears, folds, or other damage of the belt, at which point all belts should be replaced.

Removing Belts

1. Press and release the Power button to turn the unit off. The unit enters a cool-down mode. Wait until the unit automatically shuts down and OFF appears on the display.
2. Unplug the power cord.
3. Wearing heat resistant gloves, remove the Top Cover, Feeder, and Chute and set aside (Figure 3).
4. Facing the front of the unit, move to the right side panel. Rotate the unit as necessary for access.
5. Unlock the side panel door using a screwdriver, coin, or similar tool. Open the side panel (Figure 4).
6. Unlock the Lock Lever (Figure 4).
7. Remove tension on the Top Belt by pushing the Top FRONT Roller IN and UP until it locks into position.
8. Remove tension on the Bottom Belt by pushing the Bottom FRONT Roller IN and DOWN.
9. Rotate the pins shown in Figure 5.
10. Lift up on the two brackets shown in Figure 5.

NOTE: If the brackets will not move, rotate the pins from Step 9 until the brackets can be lifted up.

11. Slide the Belts out of the unit and discard (Figure 6).
12. With belts removed, wipe all four rollers and the top and bottom heater cover plates with a clean sanitized towel to remove any debris (Figure 6).

NOTE: Any debris stuck on the roller/cover plates can damage the belts.

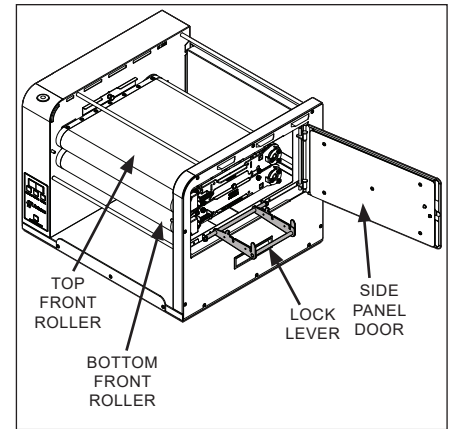


Figure 4. Unlock Side Panel

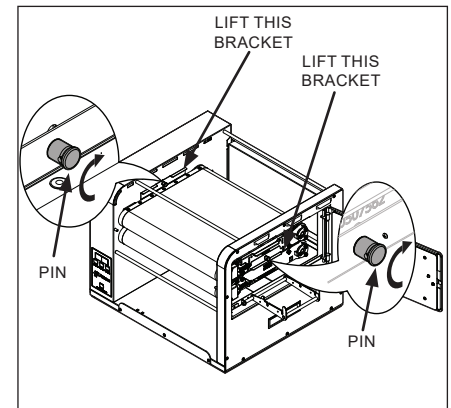


Figure 5. Rotate Pins and Lift Brackets

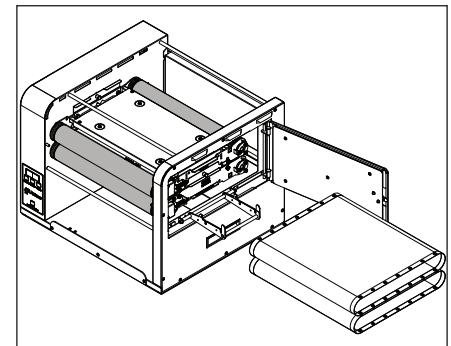


Figure 6. Remove Belts

Installing Belts

1. Follow the steps for Removing Belts.
2. Wipe both sides of the new Belts with a clean, sanitized towel sprayed with an approved sanitizer and allow to air dry.
3. Slide the new bottom belt over the bottom rollers (Figure 6).
4. Slide the new top belt over the top rollers (Figure 6).

NOTE: You may need to lift the upper roller assembly when installing the belts.

NOTE: Make sure the snaps are aligned evenly on the rollers. The snaps on the belts should face inside and should be aligned with the grooves on the roller. Belts must be installed so the exposed diagonal seam of the belt is away from the direction of belt travel.

5. Restore tension on the bottom belt by pushing UP and OUT (Figure 4).
6. Restore the tension on the top belt by pushing DOWN and OUT (Figure 4).
7. Lock the brackets shown in Figure 7 by rotating the highlighted pin so the brackets drop down into place. Push down on each bracket to ensure they are in position.
8. Engage the lock lever as shown in Figure 11. Make sure the lock lever is properly inserted into the slotted grooves.
9. Close and lock the side panel (Figure 8).
10. Reinstall the accessories (Figure 3).
11. Plug the power cord into the appropriate outlet, turn the unit on. Return the unit to use.

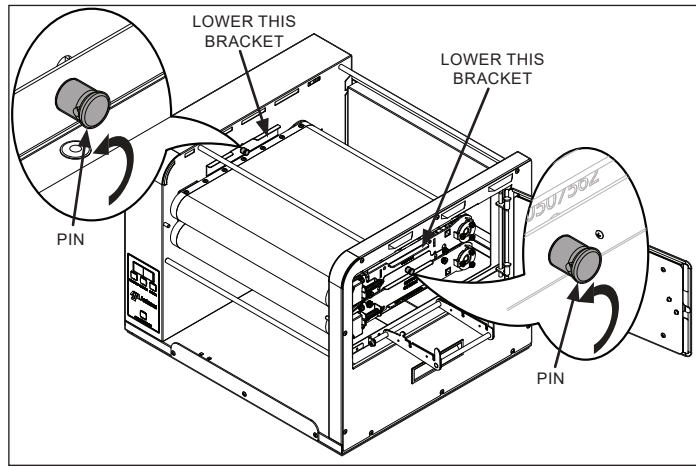


Figure 7. Rotate Pins and Lower Brackets

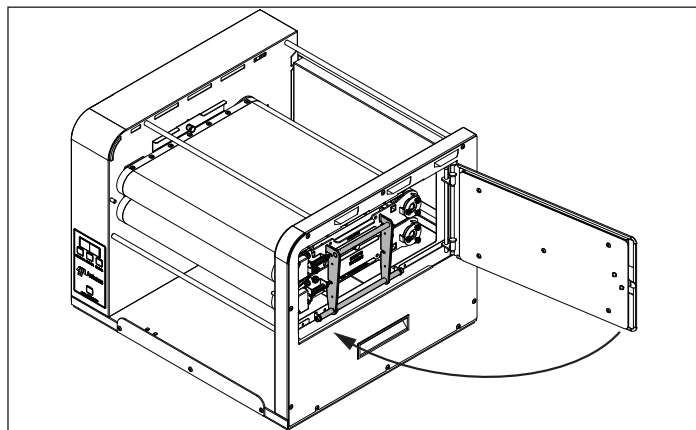


Figure 8. Close Side Panel

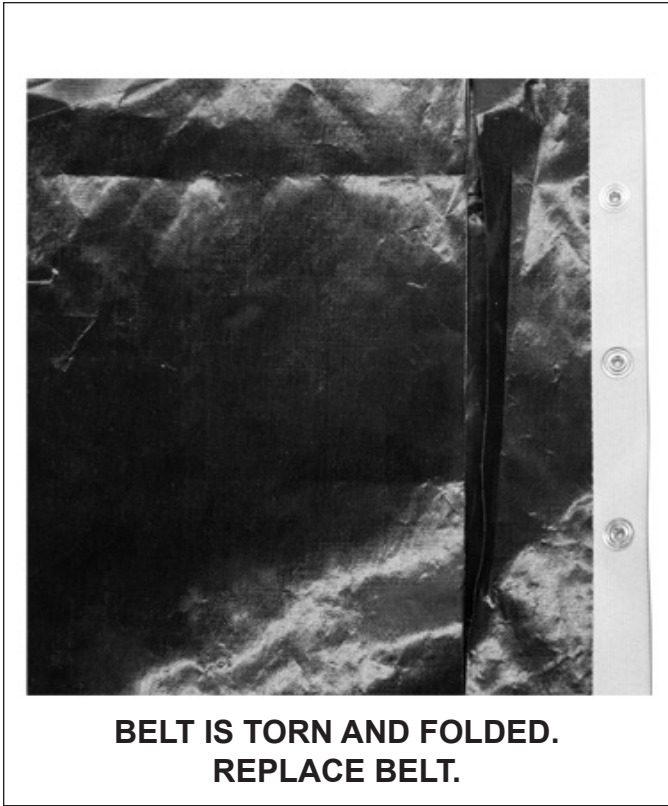


Figure 9. Example of Damaged Belt

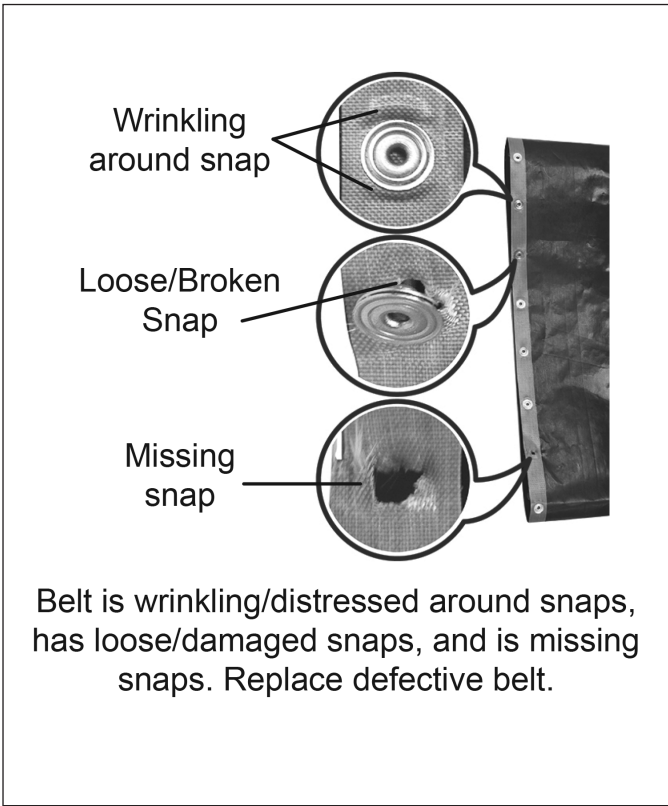


Figure 10. Example of Damaged Belt



Figure 11. Example of Damaged Belt



Figure 12. Example of Damaged Belt

Troubleshooting

Problem	Possible Cause	Corrective Action
Er 13 Control Display flashes error continuously. Product not toasting properly.	Top Platen temperature is 10% below set point temperature.	Allow the unit to warm up for 30 minutes and then recheck. If the Control Display still flashes Er13 , contact your maintenance person or Antunes Technical Service for service.
	Failed Top Platen Thermocouple.	Contact your maintenance person or Antunes Technical Service for service.
	Failed Control Board	
Er17 Control Display flashes error continuously. Product not toasting properly.	Bottom Platen temperature is 10% below set point temperature.	Allow the unit to warm up for 30 minutes and then recheck. If the Control Display still flashes Er17 , contact your maintenance person or Antunes Technical Service for service.
	Failed Bottom Platen Thermocouple.	Contact your maintenance person or Antunes Technical Service for service.
	Failed Control Board	
Control Display flashes CHEC continuously.	Control Compartment ambient temperature is above 160 °F (71 °C)	Verify side vents on toaster are unblocked and not near other heating appliances. If problem persists, contact your maintenance person or Antunes Technical Service for service.
	Failed Cooling Fan.	
	Failed Control Board	
Er 14 Control Display Flashes error continuously. Product Burns.	Failed Top Platen Solid State Relay.	Contact your maintenance person or Antunes Technical Service for service.
	Failed Control Board.	
	Failed Top Platen Thermocouple.	
Er18 Control Display Flashes error continuously. Product Burns.	Failed Bottom Platen Solid State Relay.	Contact your maintenance person or Antunes Technical Service for service.
	Failed Control Board.	
	Failed Bottom Platen Thermocouple.	
Er 12 Control Display flashes error continuously. Product not toasting properly.	Loose Top Platen Thermocouple connection on Control Board or the Platen Thermocouple is open.	Re-secure the Platen Thermocouple to the Control Board. If the Control Display still reads Er 12 , check the Thermocouple for continuity. Contact your maintenance person or Antunes Technical Service for service.
	Failed Control Board.	
Er16 Control Display flashes error continuously. Product not toasting properly.	Loose Bottom Platen Thermocouple connection on Control Board or the Platen Thermocouple is open.	Re-secure the Platen Thermocouple to the Control Board. If the Control Display still reads Er16 , check the Thermocouple for continuity. Contact your maintenance person or Antunes Technical Service for service.
	Failed Control Board.	
Er 11 Control Display flashes error continuously. Product not toasting properly.	Shorted Top Platen Thermocouple to ground.	Disconnect and re-secure the Platen Thermocouple connection to the Control Board. If the Control Display still reads Er11 , check the Thermocouple for continuity. Contact your maintenance person or Antunes Technical Service for service.
	Failed Control Board	
Er15 Control Display flashes error continuously. Product not toasting properly.	Shorted Bottom Platen Thermocouple to ground.	Disconnect and re-secure the Platen Thermocouple connection to the Control Board. If the Control Display still reads Er15 , check the Thermocouple for continuity. Contact your maintenance person or Antunes Technical Service for service.
	Failed Control Board.	
Control Display flashes StoP.	Mechanical bind in one or both conveyors.	Enter "user mode" to check the motor speed. Check both conveyors for mechanical binds. Test the motor. Replace necessary parts. Contact your maintenance person or Antunes Technical Service for service.
	Worn or damaged Ball Bearings.	
	Drive chain or sprockets damaged.	
	Failed Motor.	
	Failed Control Board.	
Control Display flashes SpEd.	Mechanical bind in one or both conveyors.	Enter "user mode" to check motor speed. Check both conveyors for mechanical binds. Replace necessary parts. Contact your maintenance person or Antunes Technical Service for service.
	Worn or damaged Ball Bearings.	
	Conveyor chains loose or damaged.	
	Drive chain or sprockets damaged.	

Problem	Possible Cause	Corrective Action
Crowns and/or Heels must be forced into the toaster. Product sticking and burning.	Belts are dirty, worn, or damaged (replace every 2-4 months).	Clean or replace Belts as described in the Maintenance section of this manual.
	Product does not meet specifications.	Contact your product supplier.
	One of the Conveyor shafts is stuck in the lower lock position.	Inspect positions of the shafts as described in the Maintenance section of this manual.
	Either both Upper/Lower Conveyor locks are not properly locked in place.	Inspect the proper position of the locks as described in the Maintenance section of this manual.
	Product does not meet specifications.	Contact your product supplier.
	Motor settings are incorrect.	Verify that the motor setting is set to 4000 as described in the Programming section of this Manual.
Side door will not close.	Either both Upper/Lower Conveyor Locks are not properly locked in place.	Inspect the proper position of the locks as described in the Maintenance section of this manual.
	The lock on the Side Door is in the locked position when trying to close the door.	Turn the lock to the unlocked position before closing the door.
Fan is making an unusual sound.	Failed Cooling Fan.	Verify vents on toaster are unblocked and not near other heating appliances. Clean fans as described in the Maintenance section of this manual. If problem persists, contact your maintenance person or Antunes Technical Service for service.
	Cooling Fan is dirty and needs to be cleaned.	
Control Display flashes HL continuously. Product is not toasting properly. Top = t-HL	Hi-Limit Control is tripped.	Allow the unit to cool and reset the Hi-Limit Control. If it trips again, contact your maintenance person or Antunes Technical Service for service.
Control Display flashes HL continuously. Product is not toasting properly. Bottom = b-HL	Hi-Limit Control is tripped.	Allow the unit to cool and reset the Hi-Limit Control. If it trips again, contact your maintenance person or Antunes Technical Service for service.
Control Display is blank.	Power Cord is not plugged in.	Plug the Power Cord into the appropriate outlet. Turn the toaster on. If the Control Display is still blank, contact your maintenance person or Antunes Technical Service for service.
	Circuit Breakers turned off or tripped. Damaged electrical outlet, plug, or Power Cord. Power Switch damaged.	Reset Circuit Breakers. If they trip again, check the Power Cord, Plug, and outlet for damage. Contact your maintenance person and Electrician for service.
	Faulty Transformer.	Replace Transformer.
Conveyors not turning.	Belt is damaged.	Replace Belts
	Motor Drive Chain is detached from sprockets.	Reinstall the Drive Chain.
	Failed Drive Motor.	Contact your maintenance person or Antunes Technical Service for service.
Belts are ripped or torn.	Rollers or Heater Cover Plates are dirty and need to be cleaned.	Clean Rollers and Heater Cover Plates as outlined in the Maintenance section of this manual.
	Belts are not installed properly.	Install Belts correctly as outlined in the Maintenance section of this manual.
	Roller(s) in the incorrect locked position during operation.	Unlock Rollers to operational position.
	Front Conveyor Lock is disengaged.	Engage and lock the Front Conveyor Lock.

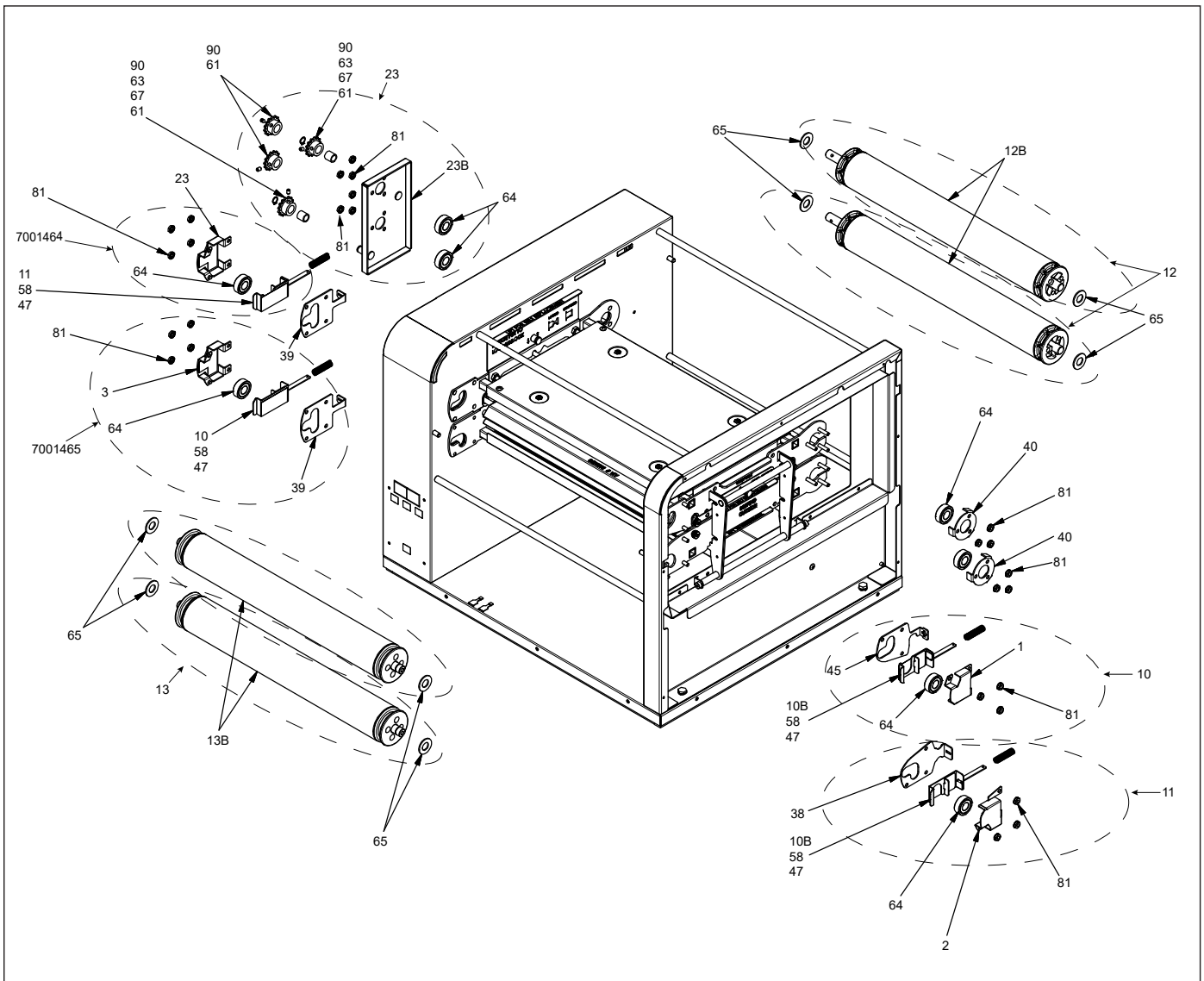
Replacement Parts

ITEM	PART NO.	DESCRIPTION	QTY
1	0013093	Brkt Assy Top	1
2	0013094	Brkt Assy Bottom	1
3	0013095	Bearing Brkt Assy	2
4	7001406	Assy, Drive Chain Tensioner	1
4B	0013111	Assy, Drive Chain Tensioner	1
5	7001582	Base Assembly	1
6	7001459	Door Assembly	1
7	7001457	Housing Door Assy	1
9	7001475	Drive Motor Assy	1
10	7001466	Front Top Compression	2
10B	0021724	Weldment, Bearing Brkt & Spring Guide - Right	2
11	7001467	Front Bottom Compression	2
11B	0021725	Weldment, Bearing Brkt & Spring Guild - Left	2
12	7001468	Drive Roller Assy Kit	1
12B	0021838	Weldment, Drive Roller Main Platen	2
13	7001470	Idler Roller Assembly	1
13B	0021839	Weldment, Idler Main Platen	2
14	7001458	End Housing Panel Wldmt	1
15	0022313	Control Housing Weldment	1
16	0022314	Main Platen Frame Wldmt	1
17	0022324	Top Frame Weldment	1
18	0022326	Cover Weldment	1
19	0022332	Back Cover Weldment	1
20	0022339	Insulation Plate Weldment	2
21	7001477	Weldment, Frame Locking Bracket	1
22	0022760	Weldment, End Housing	1
23	7001462	Idler Sproket Assembly	1
23B	0022773	Weldment, Idler Bearing	1
24	0022796	Assembly, Platen Lock Right	1
25	0022797	Assembly, Platen Lock Left	1
26	0022944	Chute	1
27	0022945	Bun Feeder Weldmt, Extend	1
28	7001153	Platen, Main 208V, 2300W	2
29	0200384	Gasket, Base - 21.64" Lg	2
30	0200385	Gasket, Base - 19.7" Lg	2
31	0400119	Bushing, Shorty 5/8"	1
32	0400138	Lock-Nut, Conduit-1/2" Npt	1
33	0400315	Strain Relief - Cord Connector	1
34	0400432	Bushing, Open/Closed	1
35	0400480	Insulation, Platen	2
36	0400522	Sheet, Release	1
37	0504083	Guard, Hi Limit	2
38	0506543	Plate, Tensioner Lh	1
39	0506566	Plate, Tensioner	2
40	0506959	Retainer, Bearing	2
41	0507551	Base Bottom Side	1
42	0507554	Electrical Cover	1
43	0507581	Plate, Air Cover	1
44	0507585	Plate, Insulation	2
45	0508220	Plate, Tensioner Rh	1
46	0508870	Retainer, Release Sheet	1
47	0600141	Spring, Compression	4
48	0600155	Spring, Compression Setting	1
49	0700479	Power Cord, Plug L6-30P	1

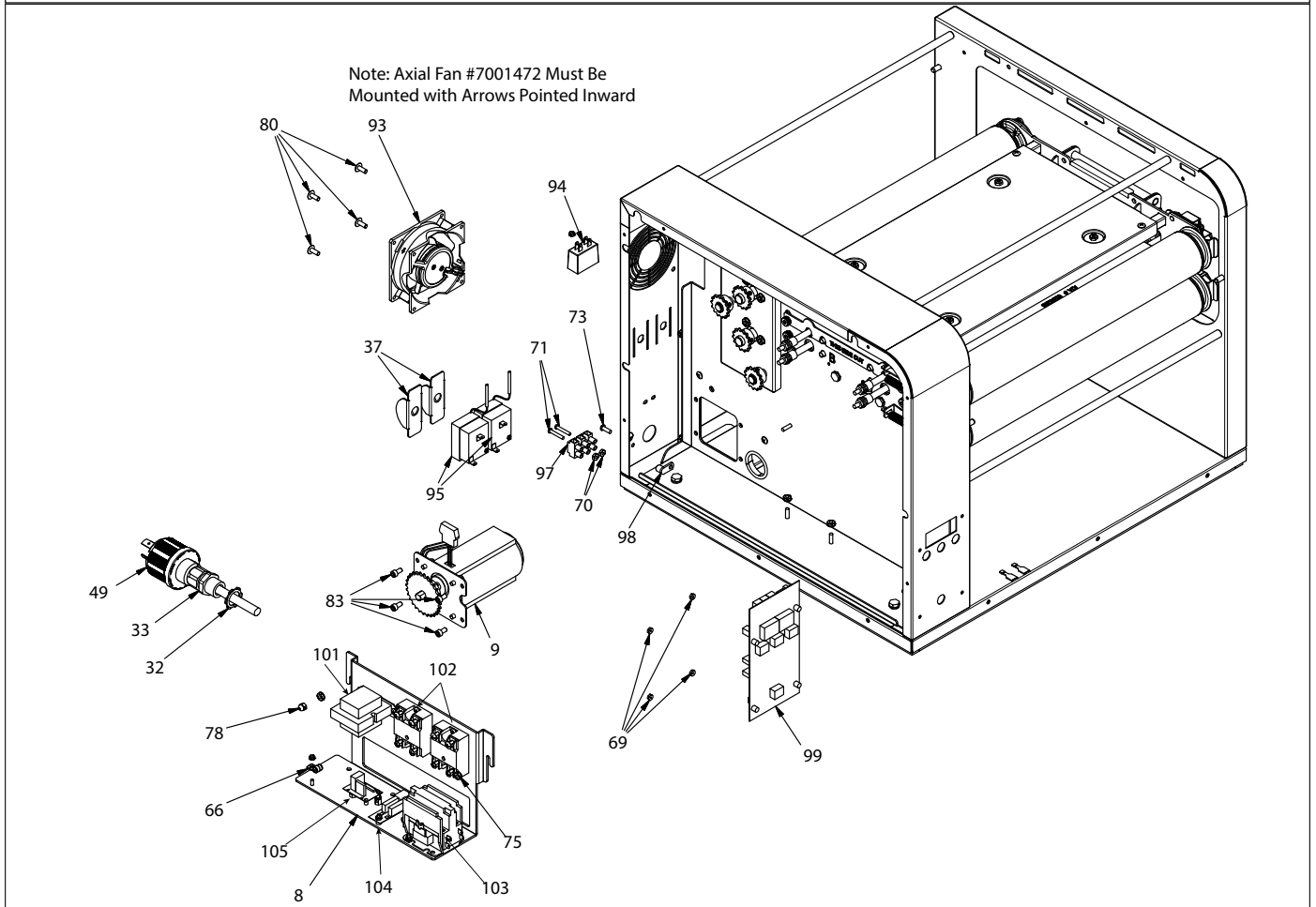
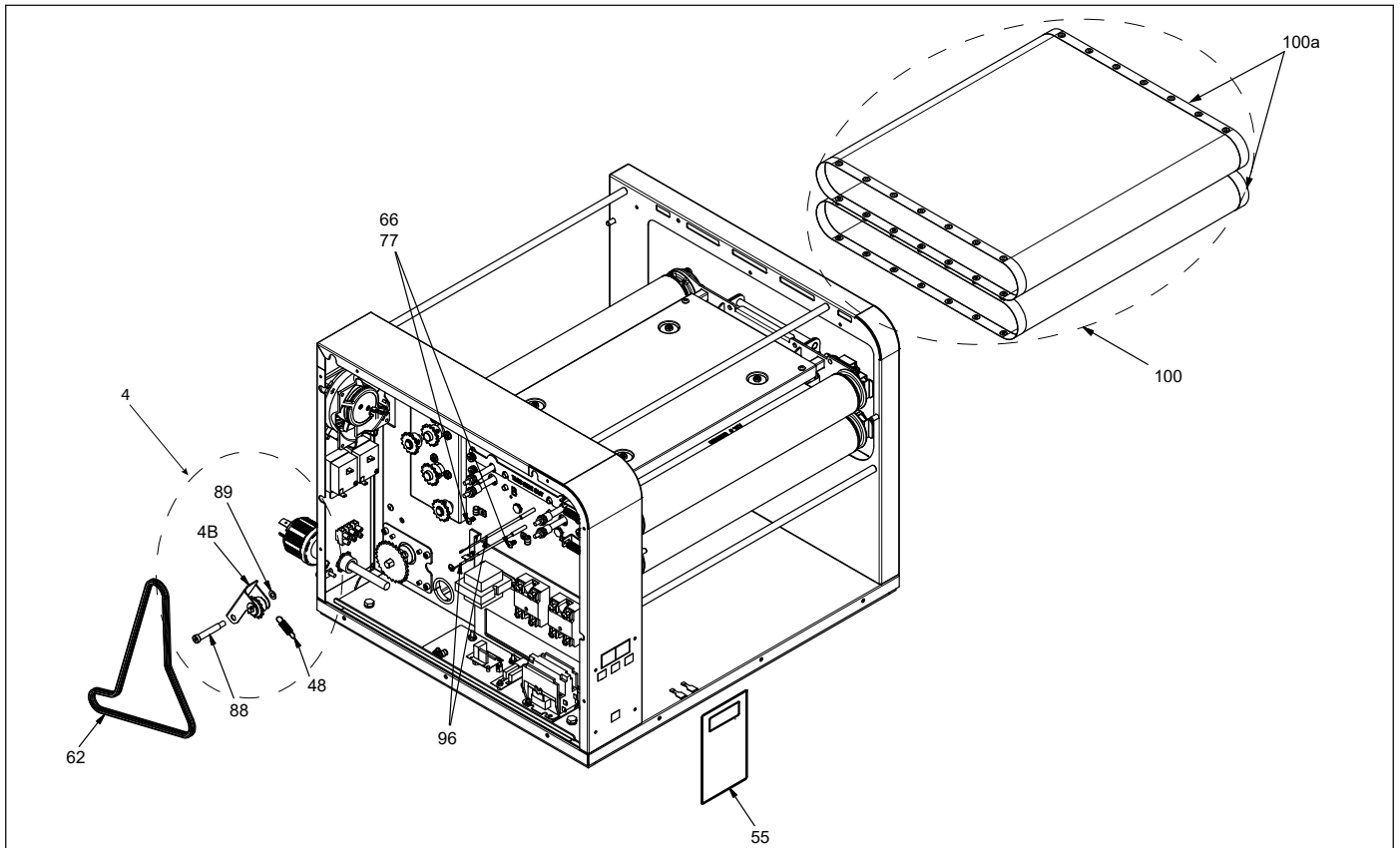
ITEM	PART NO.	DESCRIPTION	QTY
50	0701006	Wire Set, Transformer	1
51	0701007	Wire Set, Main	1
52	0701008	Wire Set, Platen	1
53	0701009	Wire Set, Power	1
54	0800438	Rod, Belt Cover	4
55	1001658	Label, Control	1
56	2000259	Tube, O.d. 1/4" X 1.625" Lg	4
57	2100212	Handle, Pocket Pull, Snap-In	2
58	2100334	Thrust Strip, Teflon	4
61	7001595	Sprocket, 25B14 1/2" Bore	4
62	7001330	Chain, Drive	1
63	2150258	Bearing, Idler	2
64	7001033	Bearing Assy, Hi-Temp 1 1/8" Od X 1/2" ID (pack of 4)	8
65	2150444	Thrust Bearing .500" Id	8
66	2180514	Clamp, Cable - Polypropylene	3
67	3000124*	Ring, Retaining 3/8"	1
69	3040105*	Nut, Hex 'Keps' #4-40	4
70	3060101*	Nut, Hex #6-32	2
71	3060123*	Screw, Mach #6-32 X 7/8" Slrndhd	1
72	3060130*	Nut, Hex Keps #6-32 (Small Pattern)	1
73	3080124*	Screw, Mach One-Way #8-32	1
74	3080157*	Screw, Tap 8-32 X 3/8"Lg	28
75	3080199*	Nut, Hex 'Keps' #8-32	1
76	3080202*	Nut, Hex Tri-Lock #8-32	1
77	3080203*	Screw, Tap 8-32 X 3/8" W/Int. Tooth Washer	1
78	3080340	Nut, Hex, Acorn Lock #8-32	1
79	3100102*	Washer, Int. Tooth-Lock,#10	1
80	3100110*	Screw, Mach. #10-32 X 1/2"	1
81	3100146*	Nut, Hex 'Keps' #10-32	1
82	3100196*	Screw, Shoulder 10-32 Ss	1
83	3100199*	Scr, #10-32 X 3/8 Lg Socket Hd Cap	1
84	3100204*	Fillister Head Phillips Screw # 10-32 X .25	1
85	3250103*	Screw, Hexcap 1/4-20 X 3/4"	1
86	3250109*	Screw, Hexcap 1/4-20 X 1/2"	1
87	3250154*	Washer, Ø1/4" Helical Spring Lock	1
88	3250177*	Screw, Shoulder 5/16 Sd X 1-1/2 SI X1/4-20	1
89	3250180*	Washer, Flat 0.468 X 0.255 Id X 0.029 Thk	1
91	3250217*	Bolt, Shoulder .313 Sd X 1.125 SI	1
92	3250220*	1/4"-20 Nylon Insert Locknut	1
93	7001472	Fan, Axial 230 Volt	1
94	7001527	Cap-Mp, Motor Run (For Motor 4000186 ONLY)	1
	4010265	Cap-Mp, Motor Run (For Motor 4000217 ONLY)	
100	7001659	Main Belt (2 pack)	1
100a	7001766	Main Belt (Single pack)	
101	7001145	Transformer, 240V/12VAC	1
102	7001143	S.S. Relay Random Phase	1
103	7001017	Contact Kit	1
104	7001528	Varistor Board Kit	1
105	7001471	Snubber Board	1

* Item available in packages of ten (10).

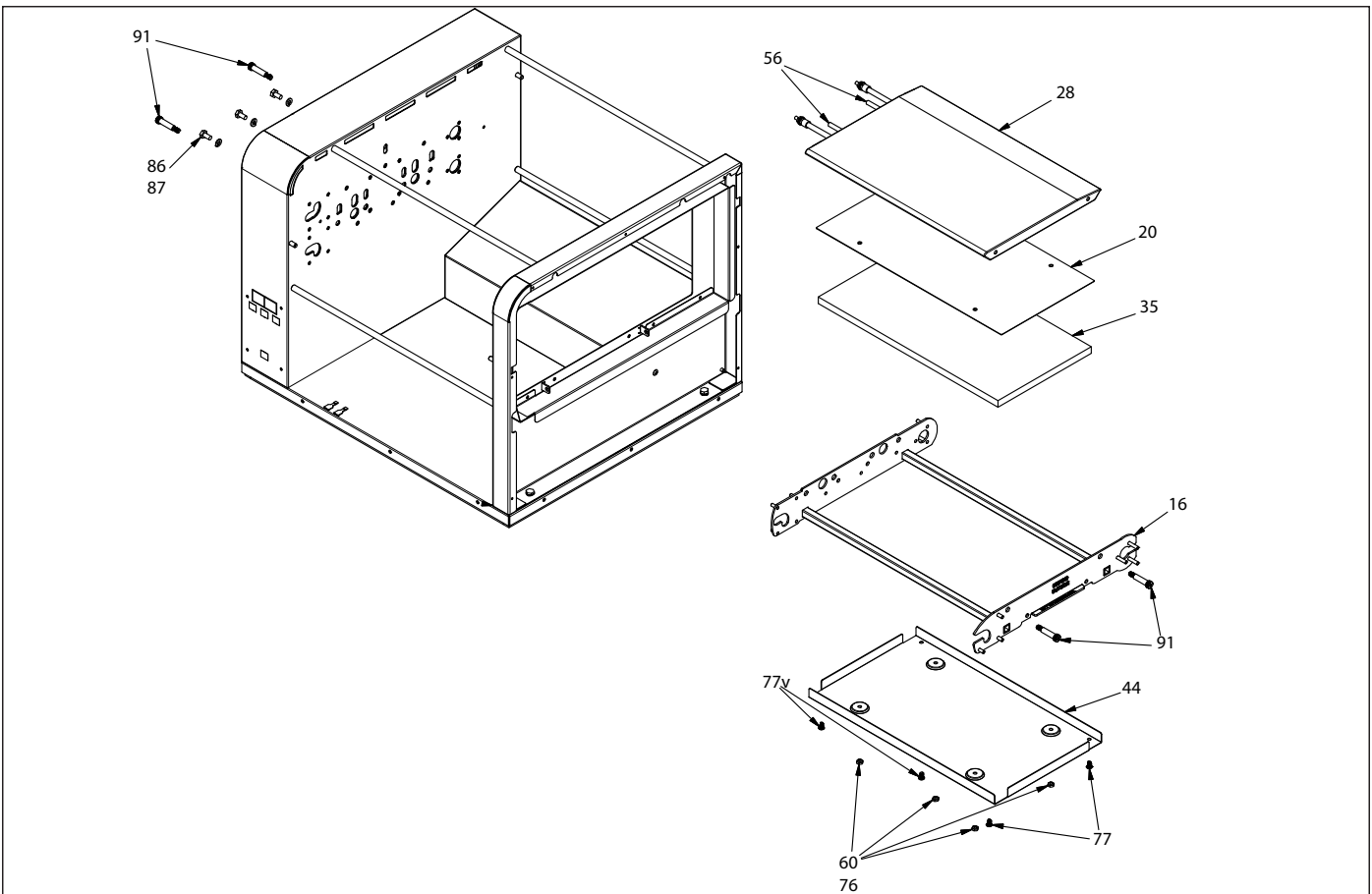
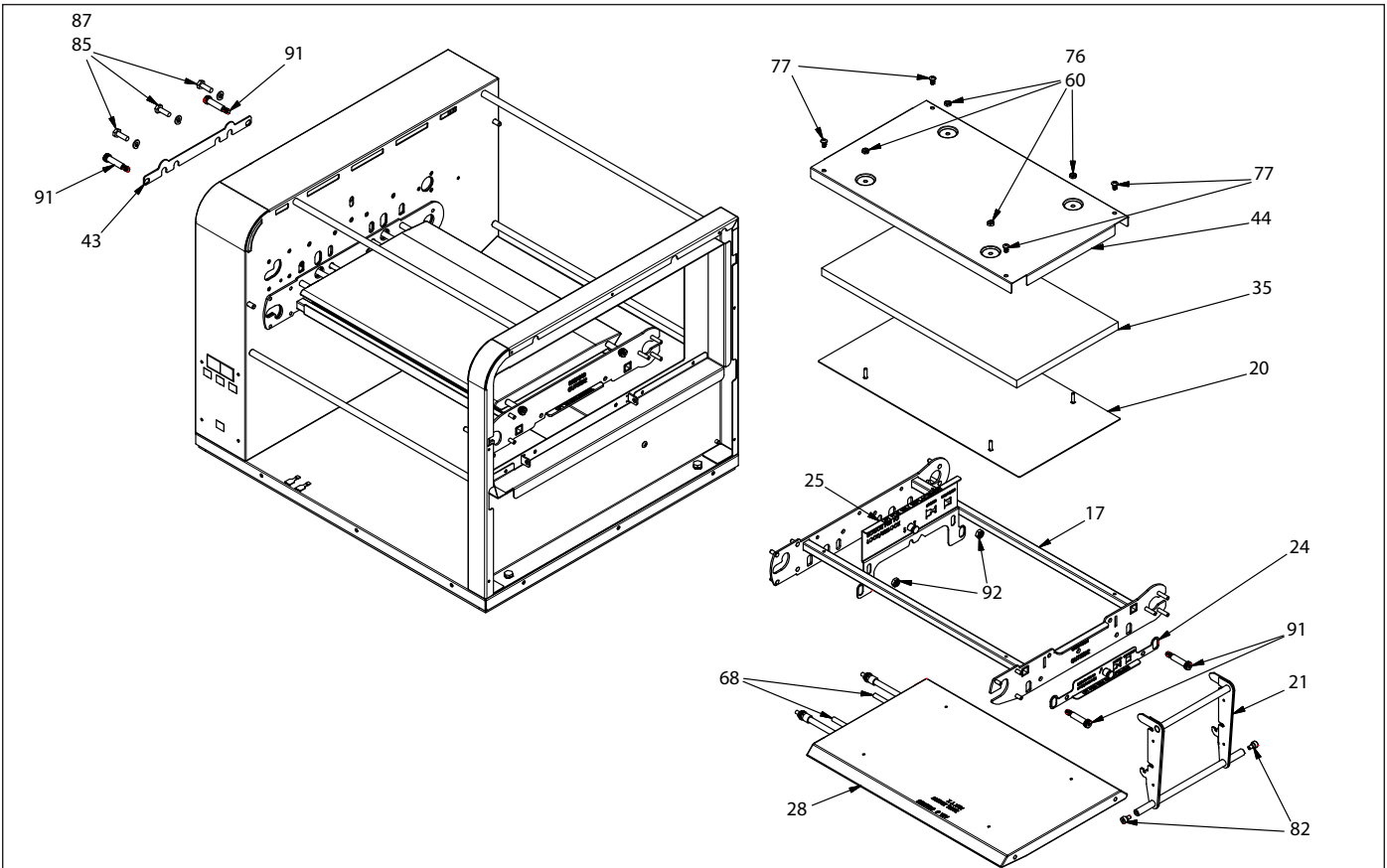
Exploded Diagram #2



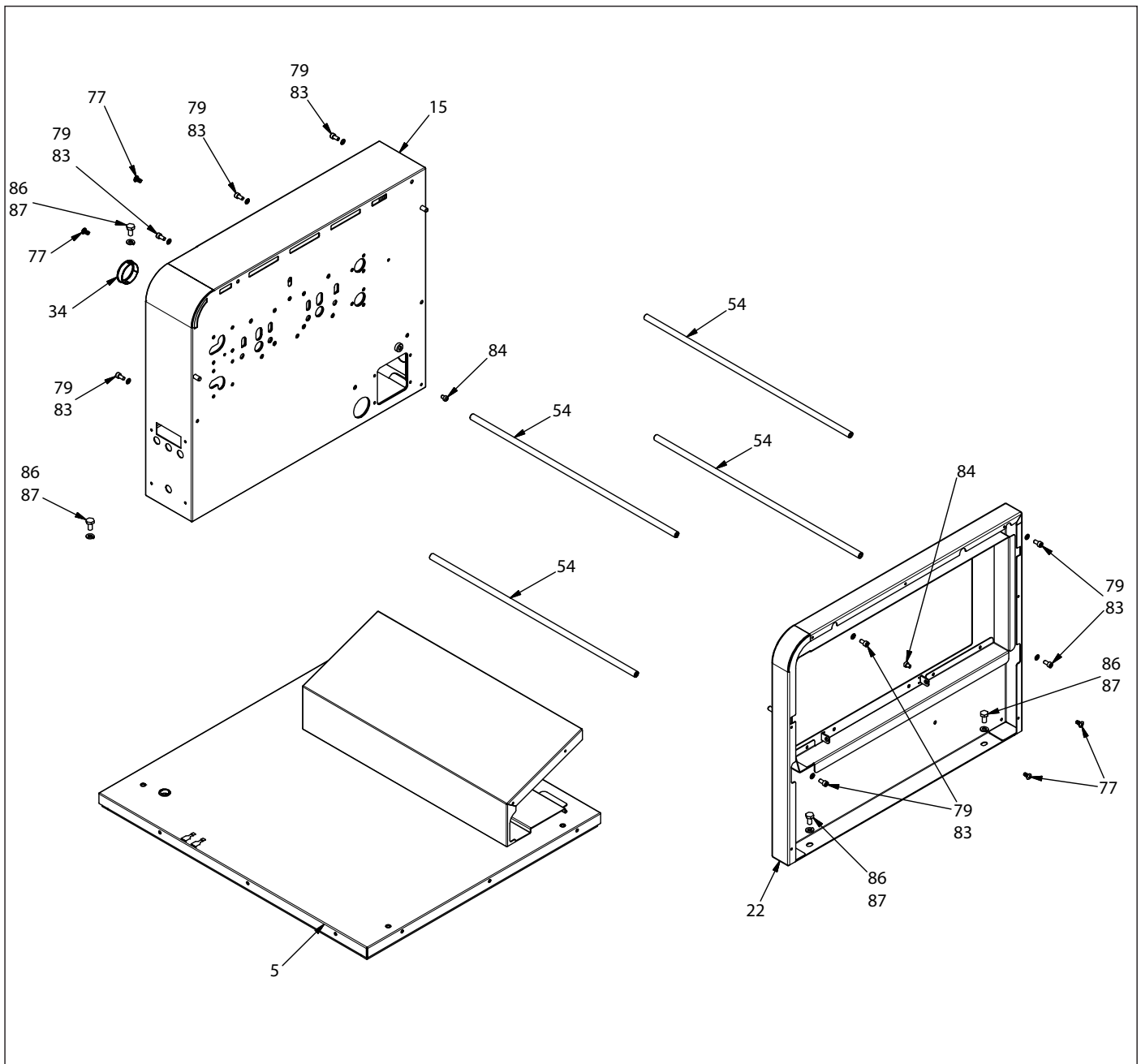
Exploded Diagram #3



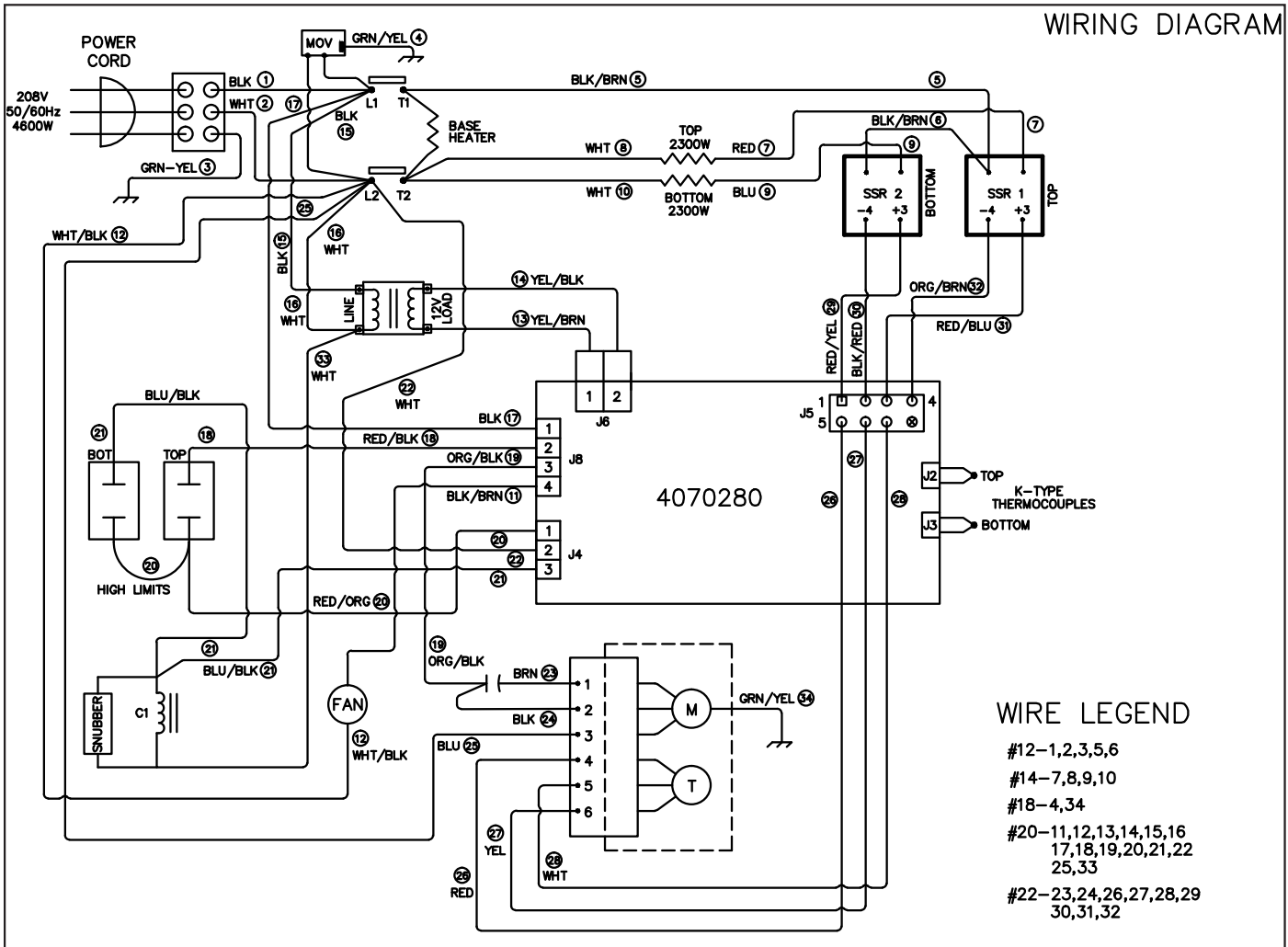
Exploded Diagram #4



Exploded Diagram #5



Wiring Diagram



Limited Warranty

Equipment manufactured by Antunes has been constructed of the finest materials available and manufactured to high quality standards. These units are warranted to be free from electrical and mechanical defects for a period of one (1) year from date of purchase under normal use and service, and when installed in accordance with manufacturer's recommendations. To insure continued operation of the units, follow the maintenance procedures outlined in the Owner's Manual. During the first 12 months, electro-mechanical parts, non-overtime labor, and travel expenses up to 2 hours (100 miles/160 km), round trip from the nearest Authorized Service Center are covered.

1. This warranty does not cover cost of installation, defects caused by improper storage or handling prior to placing of the Equipment. This warranty does not cover overtime charges or work done by unauthorized service agencies or personnel. This warranty does not cover normal maintenance, calibration, or regular adjustments as specified in operating and maintenance instructions of this manual, and/or labor involved in moving adjacent objects to gain access to the equipment. This warranty does not cover consumable/wear items. This warranty does not cover damage to the Load Cell or Load Cell Assembly due to abuse, misuse, dropping of unit/shock loads or exceeding maximum weight capacity (4 lbs). This warranty does not cover water contamination problems such as foreign material in water lines or inside solenoid valves. It does not cover water pressure problems or failures resulting from improper/incorrect voltage supply. This warranty does not cover Travel Time & Mileage in excess of 2 hours (100 miles/160 km) round trip from the nearest authorized service agency.
2. Antunes reserves the right to make changes in design or add any improvements on any product. The right is always reserved to modify equipment because of factors beyond our control and government regulations. Changes to update equipment do not constitute a warranty charge.
3. If shipment is damaged in transit, the purchaser should make a claim directly upon the carrier. Careful inspection should be made of the shipment as soon as it arrives and visible damage should be noted upon the carrier's receipt. Damage should be reported to the carrier. This damage is not covered under this warranty.
4. Warranty charges do not include freight or foreign, excise, municipal or other sales or use taxes. All such freight and taxes are the responsibility of the purchaser.
5. THIS WARRANTY IS EXCLUSIVE AND IS IN LIEU OF ALL OTHER WARRANTIES, EXPRESSED OR IMPLIED, INCLUDING ANY IMPLIED WARRANTY OR MERCHANTABILITY OR FITNESS FOR A PARTICULAR PURPOSE, EACH OF WHICH IS HEREBY EXPRESSLY DISCLAIMED. THE REMEDIES DESCRIBED ABOVE ARE EXCLUSIVE AND IN NO EVENT SHALL ANTUNES BE LIABLE FOR SPECIAL CONSEQUENTIAL OR INCIDENTAL DAMAGES FOR THE BREACH OR DELAY IN PERFORMANCE OF THIS WARRANTY.



Corporate Headquarters

Carol Stream, Illinois
Phone: +1 (630) 784-1000
Toll Free: +1 (800) 253-2991
Fax: +1 (630) 784-1650

China Facility

Suzhou, China
Phone: +86-512-6841-3637
Fax: +86-512-6841-3907